

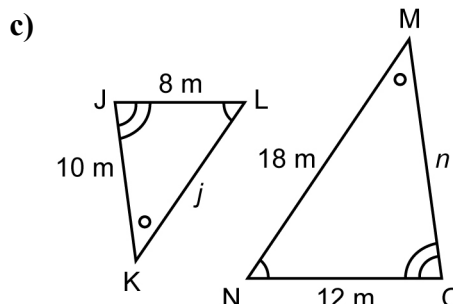
Name: \_\_\_\_\_

Date: \_\_\_\_\_

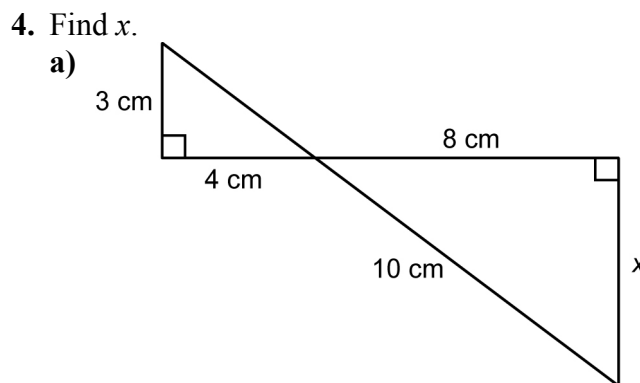
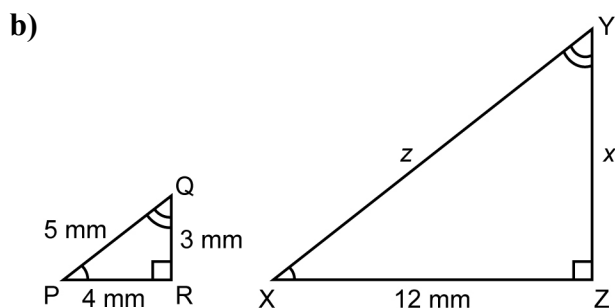
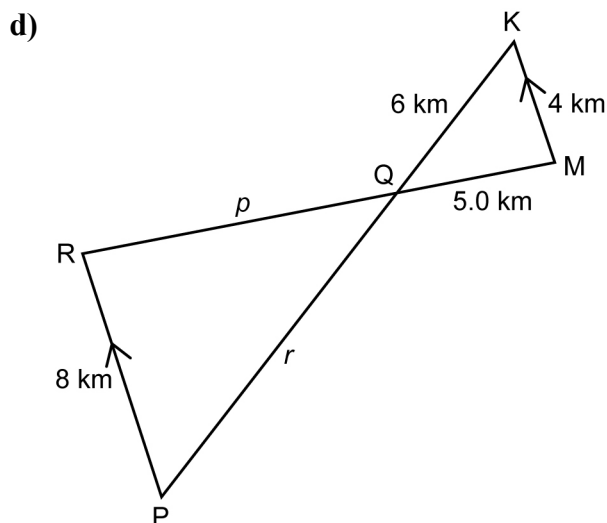
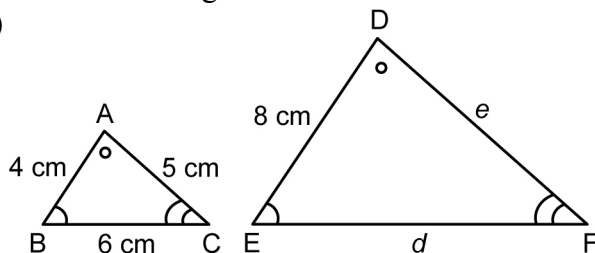
**BLM 7-8**  
(page 1)

## Section 7.2 Practice Master

1. A right triangle has side lengths 5 cm, 12 cm, and 13 cm.
  - a) Draw the triangle.
  - b) A similar triangle has a hypotenuse 52 cm long. What is the scale factor?
  - c) What are the lengths of the legs of the triangle in part b)?
  - d) Draw the similar triangle.



2. Refer to question 1.
  - a) Find the area of each triangle.
  - b) How are these areas related?
  - c) How do the areas help to confirm that the triangles are similar?
3. The triangles in each pair are similar. Find the unknown side lengths.

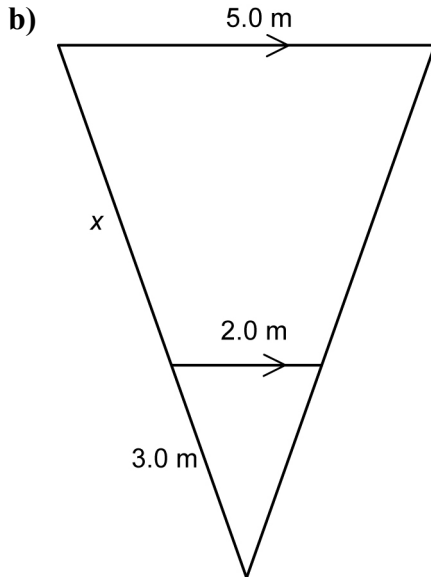


Name: \_\_\_\_\_

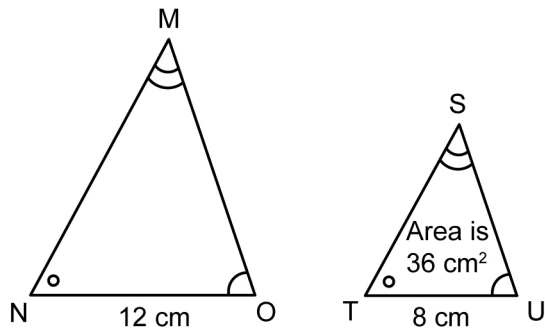
Date: \_\_\_\_\_

**BLM 7-8**

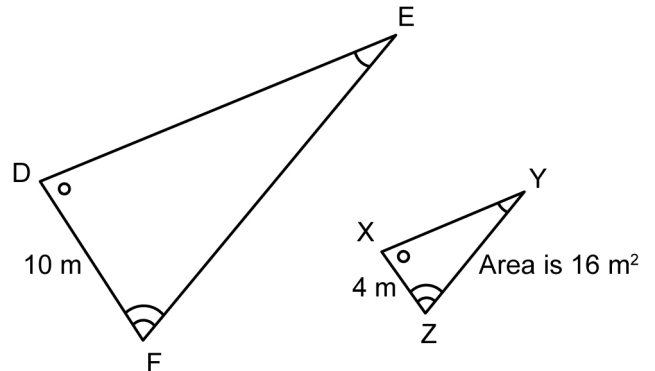
(page 2)



5. a)  $\triangle MNO \sim \triangle STU$ . Find the area of  $\triangle MNO$ .



- b)  $\triangle DEF \sim \triangle XYZ$ . Find the area of  $\triangle DEF$ .



6. Use the given measures to find the width of the canal.

